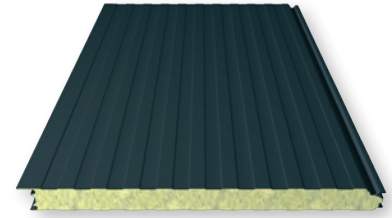


VULCASTEEL WALL 1000 SF

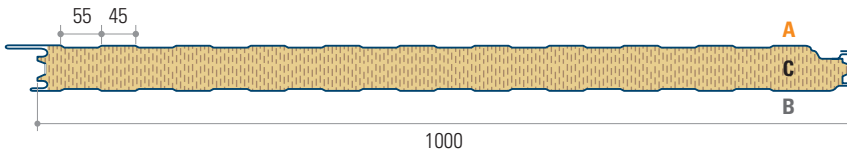
COMPOSITE ROOF PANEL



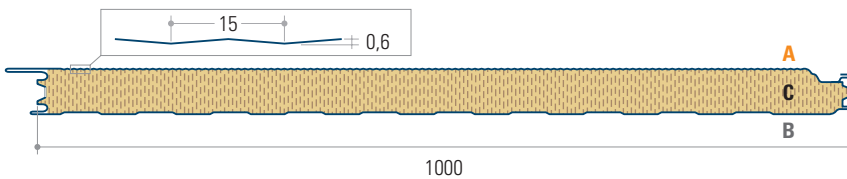
APPLICATION

The Vulcasteel Wall 1000 Secret fixation panel is an insulated wall panel which combines fire resistance with aesthetics due to its mineral fibre core.

EUROBOX



MICRO



THERMAL CHARACTERISTICS

Core Thickness (mm)	50	60	80	100	120	140	160	180	200
U-Value (W/m ² .K)	0,75	0,64	0,50	0,40	0,34	0,30	0,26	0,23	0,21
Weight (kg/m ²)	15,30	16,30	18,30	20,30	22,30	25,30	27,30	29,30	31,30

U-values calculated in accordance with the method required by Part L2 (England and Wales) Building Regulations and Section 6 (Scotland) Technical Handbooks.

PRODUCT TOLERANCES [EN 14509]

Length (mm)	L < 3000 mm : -5 mm L > 3000 mm : -10 mm	L < 3000 mm : +5 mm L > 3000 mm : +10 mm
Width (mm)	-2 mm	+2 mm
Thickness (mm)	-2 mm	+2 mm

LENGTHS

The Vulcasteel Wall 1000 SF panel is available from 1.000 mm until 14.000 mm. Other lengths are available upon demand.

EXTERNAL PROFILING

The outer sheet has 3 possible external finishings. This can be either eurobox, microrib 15 or flat.

ACOUSTIC

The inner sheet can be perforated which allows a minimal sound reduction of 32 dB.

VULCASTEEL WALL 1000 SF

COMPOSITE ROOF PANEL

MATERIALS

Steel sheet

S280GD : Z275 – ZA265 (Zink-Aluminum alloy)

Coatings – Outer sheet*

- PE 25 μ
- PUR 35 μ
- PVDF 25 μ
- PUR 50 μ - 60μ
- Plastisol 200 μ HP
- Plastisol 200 μ HPS

Coating – Inner sheet

- PE 15 μ
- PE 25μ
- Foodsafe
- Colorfarm 35μ

* Please consult us for our colorflow

Insulation core

Mineral fibre wool

FIRECLASS [EN 13501-1]

A2-s1, d0

FIRE RESISTANCE

100	* When mounted vertically
EI 60*	

PACKAGING

The panels are packed horizontally on a wooden pallet. The top and bottom of the pack is protected by polystyrene blocks to prevent damage due to handling. The number of panels per pallet depends upon the core thickness of the panel.

Core Thickness (mm)	50	60	80	100	120	145	160	180	200
Panels / Pallet **	14	12	9	7	6	6	4	4	3

** Amount reduces when panels are transported by container

QUALITY

The Joris Ide products are manufactured complying to the ISO 9001 Standards. The material which are processed are from high quality and were chosen on basis of different criteria to match our customer's expectations. Joris Ide proudly obtained the EPAQ-label, which is the European Quality Assurance Association for Panels and Profiles. All our products also have the CE-mark.

CONTACT

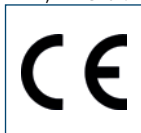
division.export@joriside.be

+32 (0) 51 61 07 77 - F. +32 (0) 51 61 07 79

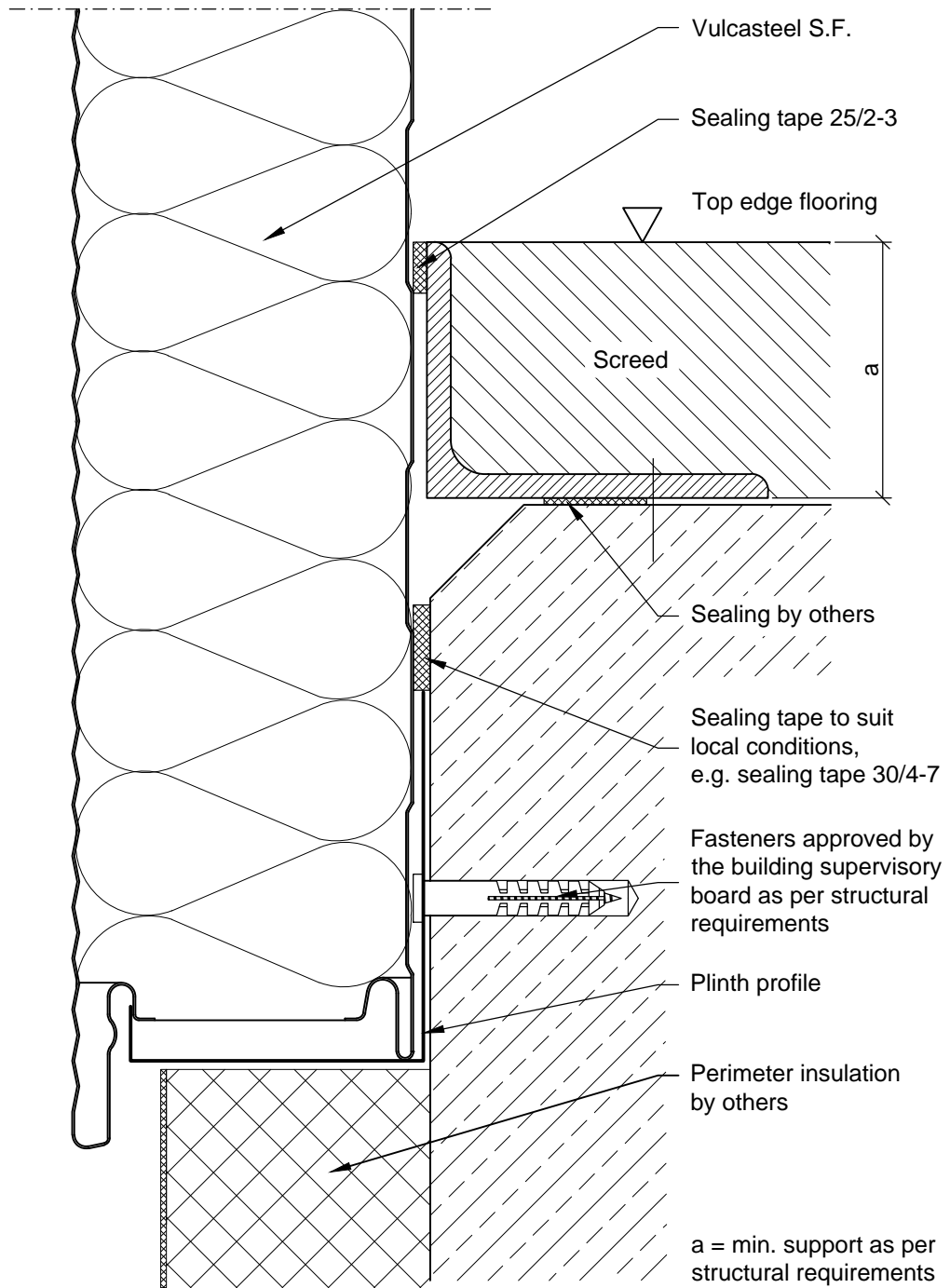
www.joriside.com

NV JORIS IDE SA - HILLE 174, B-8750 ZWEVEZELE, BELGIUM - VAT BE 0450.452.063, RPR/RPM BRUGES - BIC: GEBABEBB - BANK ACCOUNT: 280-0296453-58

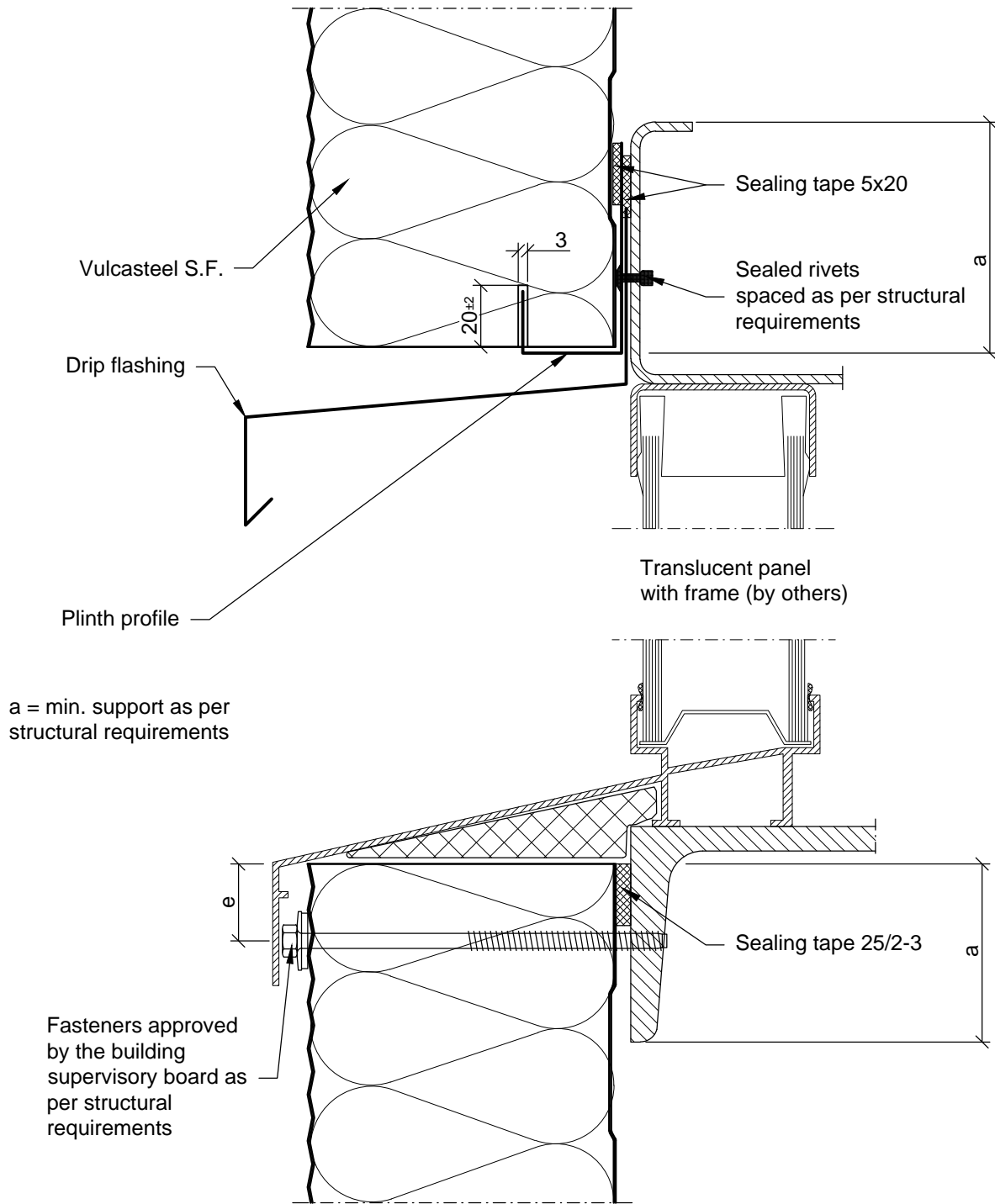
BAN. BE 05 2800 2964 5358



JORISIDE
THE STEEL FUTURE
MEMBER OF JORIS IDE GROUP

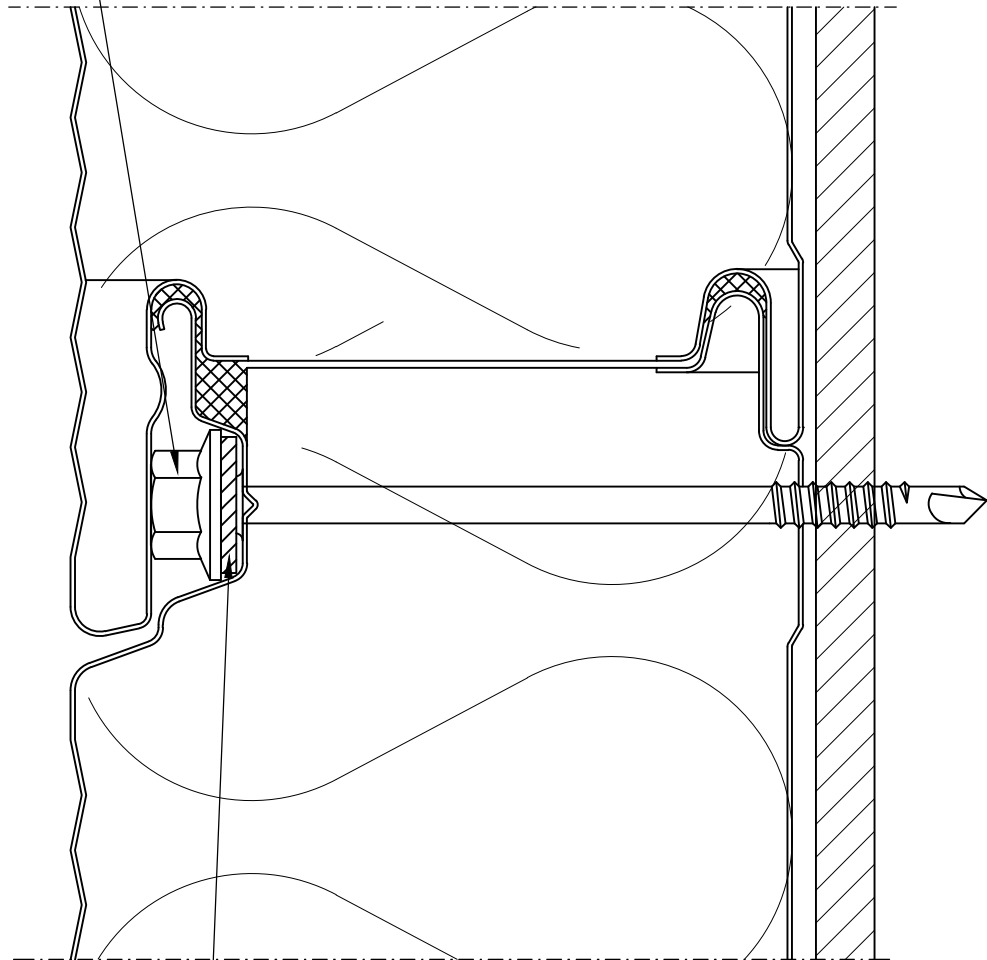


**HORIZONTAL LAYING
 BOTTOM
 SCALE 1:2**



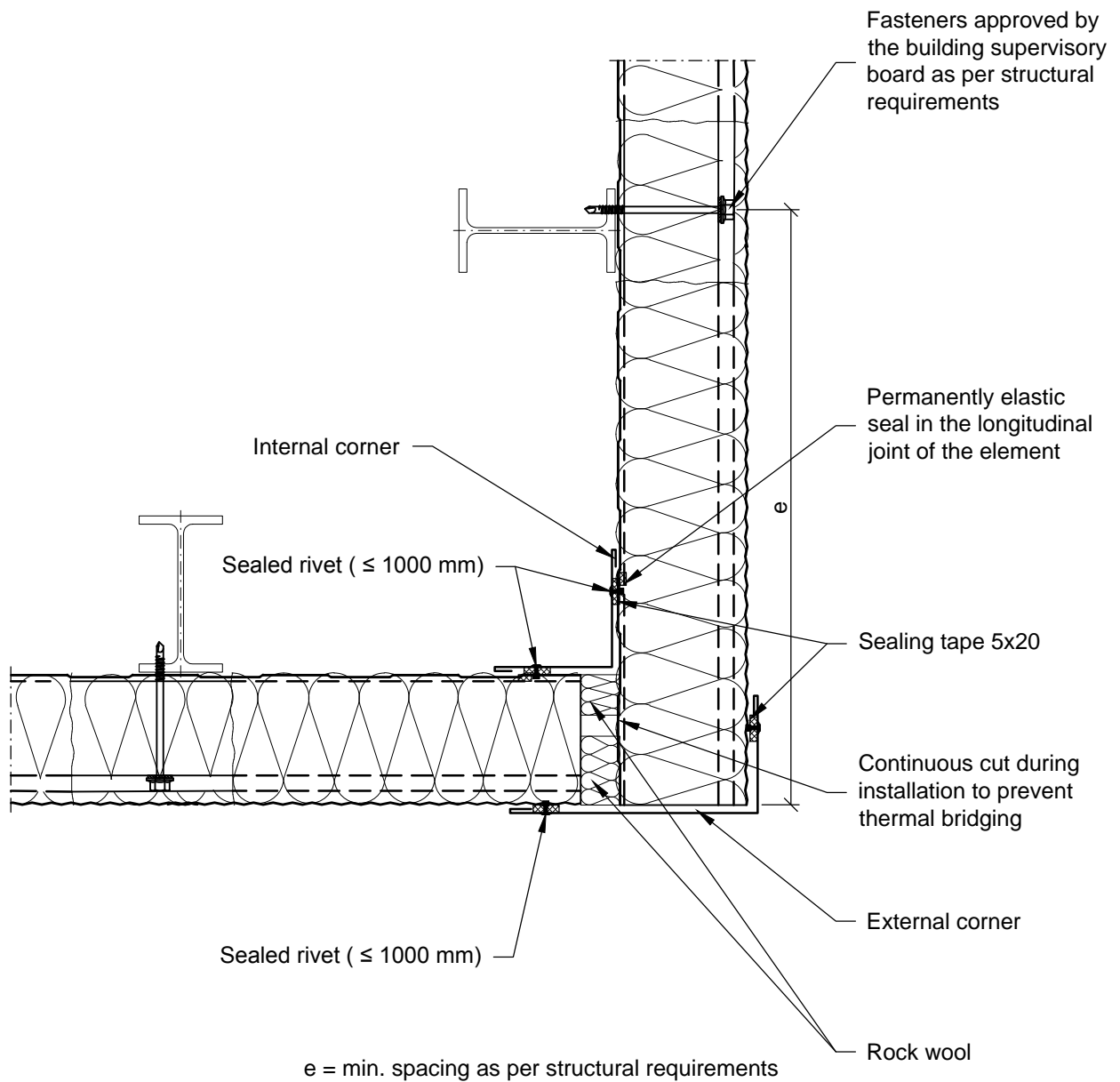
**HORIZONTAL LAYING
 HEAD + CILL OF PANEL
 SCALE 1:2**

Fasteners approved by the
building supervisory board as
per structural requirements

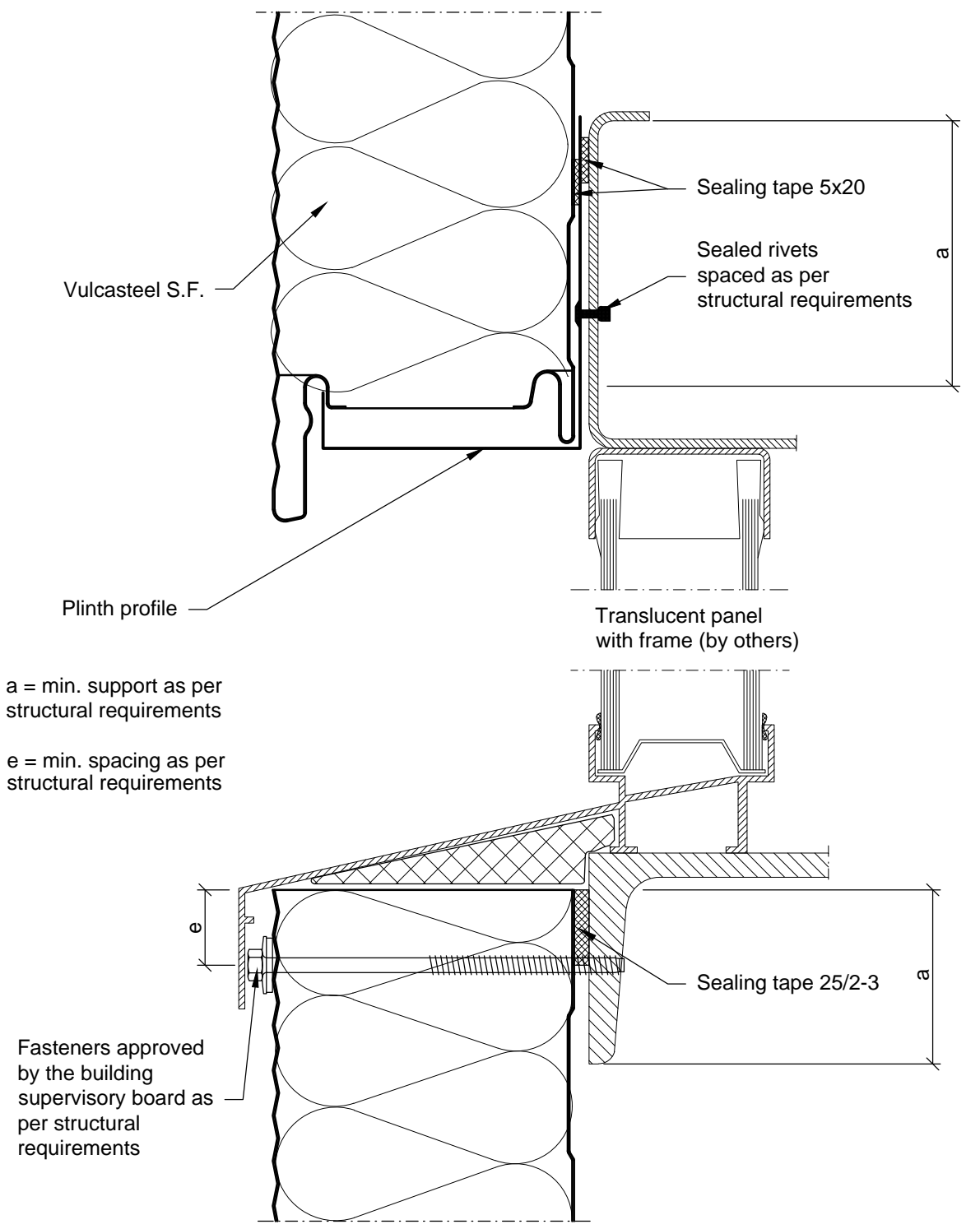


Use bolts with a washer $\varnothing 19$

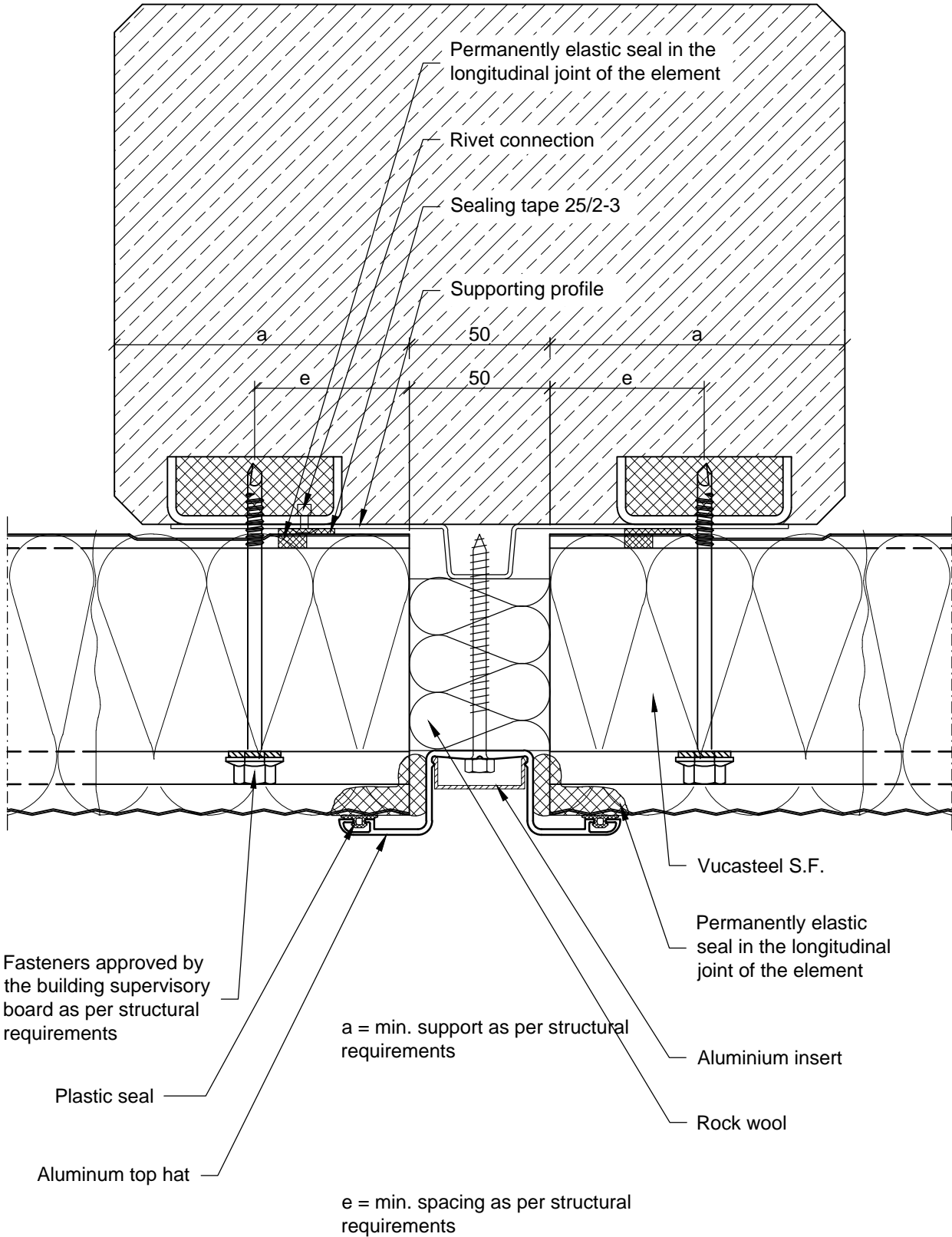
**HORIZONTAL LAYING
LONGITUDINAL (HORIZONTAL) JOINT
SCALE 1:1**



HORIZONTAL LAYING EXTERNAL CORNER
SCALE 1:5



**HORIZONTAL LAYING
 HEAD + CILL OF PANEL
 SCALE 1:2**



**HORIZONTAL LAYING
 INTERSECTION (VERTICAL) JOINT
 SCALE 1:2**